

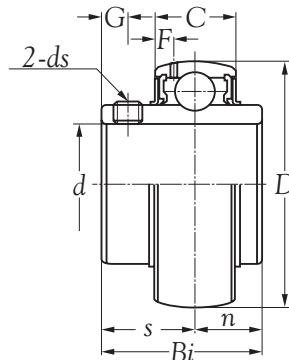
Shaft dia. mm inch	Bearing number	Nominal dimensions									Basic load ratings		Weight Kg
		mm inch									N		
		d	D	Bi	C	n	s	G	F	ds	dynamic Cr	static Cor	
12 1/2	UC 201 D1 UC 201-8 D1	12 0.5000	47 1.8504	31.0 1.2205	16 0.6299	12.7 0.5000	18.3 0.7205	5.0 0.1968	4.0 0.1575	M 6X0.75 1/4-28 UNF	12,800	6,650	0.21 0.21
15 5/8	UC 202 D1 UC 202-10 D1	15 0.6250	47 1.8504	31.0 1.2205	16 0.6299	12.7 0.5000	18.3 0.7205	5.0 0.1968	4.0 0.1575	M 6X0.75 1/4-28 UNF	12,800	6,650	0.20 0.20
17 11/16	UC 203 D1 UC 203-11 D1	17 0.6875	47 1.8504	31.0 1.2205	16 0.6299	12.7 0.5000	18.3 0.7205	5.0 0.1968	4.0 0.1575	M 6X0.75 1/4-28 UNF	12,800	6,650	0.19 0.19
20 3/4	UC 204 D1 UC 204-12 D1	20 0.7500	47 1.8504	31.0 1.2205	16 0.6299	12.7 0.5000	18.3 0.7205	5.0 0.1968	4.0 0.1575	M 6X0.75 1/4-28 UNF	12,800	6,650	0.17 0.18
25 1	UC 205 D1 UC 205-16 D1	25 1.0000	52 2.0472	34.1 1.3425	17 0.6693	14.3 0.5630	19.8 0.7795	5.5 0.2165	4.3 0.1702	M 6X0.75 1/4-28 UNF	14,000	7,850	0.21 0.20
30 1-1/8 1-1/4	UC 206 D1 UC 206-18 D1 UC 206-20 D1	30 1.1250 1.2500	62 2.4409	38.1 1.5000	19 0.7480	15.9 0.6260	22.2 0.8740	6.0 0.2362	4.7 0.1850	M 6X0.75 1/4-28 UNF	19,500	11,300	0.32 0.34 0.30
35 1-1/4 1-3/8	UC 207 D1 UC 207-20 D1 UC 207-22 D1	35 1.2500 1.3750	72 2.8346	42.9 1.6890	20 0.7874	17.5 0.6890	25.4 1.0000	6.5 0.2559	4.6 0.1811	M 8X1 5/16-24 UNF	25,700	15,300	0.47 0.53 0.48
40 1-1/2	UC 208 D1 UC 208-24 D1	40 1.5000	80 3.1496	49.2 1.9370	21 0.8268	19.0 0.7480	30.2 1.1890	8.0 0.3150	4.6 0.1811	M 8X1 5/16-24 UNF	29,100	17,800	0.64 0.68
45 1-5/8 1-3/4	UC 209 D1 UC 209-26 D1 UC 209-28 D1	45 1.6250 1.7500	85 3.3464	49.2 1.9370	22 0.8661	19.0 0.7480	30.2 1.1890	8.0 0.3150	4.9 0.1929	M 8X1 5/16-24 UNF	32,500	20,400	0.68 0.78 0.70
50 1-7/8	UC 210 D1 UC 210-30 D1	50 1.8750	90 3.5433	51.6 2.0315	24 0.9449	19.0 0.7480	32.6 1.2835	9.0 0.3543	5.5 0.2166	M 10X1.25 3/8-24 UNF	35,000	23,200	0.80 0.87
55 2	UC 211 D1 UC 211-32 D1	55 2.0000	100 3.9370	55.6 2.1890	25 0.9842	22.2 0.8740	33.4 1.3150	9.0 0.3543	5.4 0.2126	M 10X1.25 3/8-24 UNF	43,500	29,200	1.12 1.27

Remark: 1) Bearing with grease holes and grease groove.
2) Bearing without stop pin.

Technical supplement


Cages	Slinger	Precision	Grease
Steel	Steel	Normal	Shell Alvania RLQ 2

Remark: If you have more inquiry of technical, please inquire
SLB web-site: [Http://www.slbgroup.com](http://www.slbgroup.com).



Shaft dia. mm inch	Bearing number	Nominal dimensions									Basic load ratings		Weight Kg
		<i>d</i>	<i>D</i>	<i>Bi</i>	<i>C</i>	<i>n</i>	<i>s</i>	<i>G</i>	<i>F</i>	<i>ds</i>	N dynamic Cr	N static Cor	
60 2-1/4	UC 212 D1 UC 212-36 D1	60 2.2500	110 4.3307	65.1 2.5630	27 1.0630	25.4 1.0000	39.7 1.5630	10.5 0.4134	5.9 0.2323	M 10X1.25 3/8-24 UNF	52,500	36,000	1.53 1.67
65 2-1/2	UC 213 D1 UC 213-40 D1	65 2.5000	120 4.7244	65.1 2.5630	28 1.1024	25.4 1.0000	39.7 1.5630	12.0 0.4724	5.5 0.2166	M 12X1.5 1/2-20 UNF	57,500	40,000	1.86 1.94
70 2-3/4	UC 214 D1 UC 214-44 D1	70 2.7500	125 4.9212	74.6 2.9370	30 1.1811	30.2 1.1890	44.4 1.7480	12.0 0.4724	6.1 0.2402	M 12X1.5 1/2-20 UNF	62,000	44,000	2.05 2.06
75 3	UC 215 D1 UC 215-48 D1	75 3.0000	130 5.1181	77.8 3.0630	32 1.2598	33.3 1.3110	44.5 1.7520	12.0 0.4724	7.0 0.2756	M 12X1.5 1/2-20 UNF	66,000	49,500	2.21 2.13
80 3-1/8	UC 216 D1 UC 216-50 D1	80 3.1250	140 5.5118	82.6 3.2520	33 1.2992	33.3 1.3110	49.3 1.9409	14.0 0.5512	7.5 0.2953	M 12X1.5 1/2-20 UNF	72,500	53,000	2.79 2.84
85 3-1/4	UC 217 D1 UC 217-52 D1	85 3.2500	150 5.9055	85.7 3.3740	35 1.3780	34.1 1.3425	51.6 2.0315	14.0 0.5512	7.5 0.2953	M 12X1.5 1/2-20 UNF	83,500	64,000	3.38 3.60
90 3-1/2	UC 218 D1 UC 218-56 D1	90 3.5000	160 6.2992	96.0 3.7795	37 1.4567	39.7 1.5630	56.3 2.2165	15.0 0.5906	8.0 0.3150	M 12X1.5 1/2-20 UNF	96,000	71,500	4.45 4.56

Remark: 1) Bearing with grease holes and grease groove.
2) Bearing without stop pin.



Technical supplement

Cages	Slinger	Precision	Grease
Steel	Steel	Normal	Shell Alvania RLQ 2

Remark: If you have more inquiry of technical, please inquire
SLB web-site: [Http://www.slbgroup.com](http://www.slbgroup.com).